

*STRATUM INTERNATIONAL*

79 196.9665

St

International

# October 2025 Mining Roundup

Key Global Mining Updates: projects, policies  
and market moves you need to know.



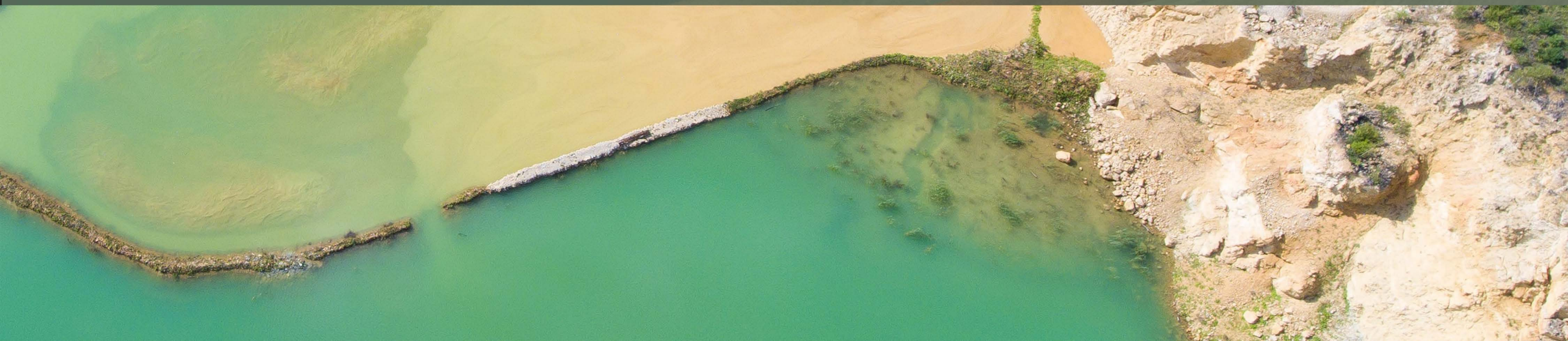
## Major Projects

### **Stibnite Gold-Antimony Mine (Idaho, USA)**

- Construction has started, targeting 450,000 oz gold/year
- Also contains significant antimony reserves, critical for tech & defense
- Financed partly by the U.S. Export-Import Bank

### **Hyland Gold Project (Yukon, Canada)**

- Updated resource estimates confirm strong gold & silver reserves
- Potential for expansion along strike and at depth



## Policy & Regulation

### **U.S. Copper Smelter Rules**

- Environmental limits eased
- Supports domestic copper output

### **Australia–U.S. Critical Minerals Pact**

- Fast-tracks two mining projects
- Strengthens critical minerals partnership



## Corporate Moves

### **BHP – Arizona Copper Mines**

- Reopening 4 dormant sites under review
- Focus on boosting U.S. copper production

### **Perpetua Resources**

- \$255M investment from JPMorgan & Agnico Eagle
- Accelerating Stibnite mine development

### **Rio Tinto & Chinalco**

- Reducing Chinalco stake to ~11%
- Simplifying ownership structure



## Global Mining Landscape

### **Codelco (Chile)**

- Warns copper output could plateau at 5.5M tonnes/year

### **Teck Resources (Chile)**

- Quebrada Blanca expansion paused for operational fixes

### **Cobre Panama Mine (Panama)**

- Community backlash over closure
- Government reviewing potential reopening



*STRATUM INTERNATIONAL*

79 196.9665

St

International

Insight beyond search.

Follow for monthly updates and  
insights from around the world.

STRATUM™  
INTERNATIONAL

